



## A Review Study on Fungal Diseases of Papaya and Their Physiological Aspects

Lakshmi Maurya and Arvind Kumar Singh

*Department of Botany, T.D.P.G. College, Jaunpur Affiliated to VBSP University, Jaunpur (U.P.) 222002.*

### ABSTRACT

A tropical fruit crop with significant economic value, papaya (*Carica papaya* L.) is grown all over the world. However, a number of fungal infections that lower yield, fruit quality, and marketability seriously impair its production. Both the pre-harvest and post-harvest phases are greatly impacted by major fungal diseases such as anthracnose, powdery mildew, black spot, stem-end rot, and Phytophthora rot. In addition to producing obvious symptoms, many infections produce intricate physiological alterations in their host plants, such as interference with respiration, photosynthesis, water balance, and metabolic functions. The main fungal infections that damage papaya, their symptoms, infection processes, and physiological effects on host plants are compiled in this article.

It also covers developments in host-pathogen interactions, disease detection, and management techniques. Developing sustainable disease management strategies and increasing papaya output require an understanding of the physiological changes brought on by fungal diseases.

### KEYWORDS

Host-pathogen interaction, infection, papaya, fungal disease.

### ARTICLE HISTORY

**Received:** 27 January 2026

**Accepted:** 03 February 2026

**Published:** 05 March 2026

### CITATION

Maurya. L. & Singh, A.K., (2026). A Review Study on Fungal Diseases of Papaya and Their Physiological Aspects, Global Journal of Science and Technology (GJST), 2(1), 84-90. <https://doi.org/10.65523/gjst.2026.v2.i1.11>

### 1. Introduction

Fast-growing papayas (*Carica papaya* L.) are grown for their nutritional and therapeutic qualities in tropical and subtropical areas (FAO, 2018; Singh, 2012). Due to its high economic return and demand in both domestic and international markets, it is extensively farmed in nations like Mexico, Brazil, and India (ICAR, 2019). However, a number of biotic stressors, especially fungal infections, which have a substantial impact on crop yield and fruit quality, limit papaya cultivation (Agris, 2005; Sharma, 2015).



At every stage of papaya growth, including the seedling, vegetative, flowering, and post-harvest phases, fungal pathogens are among the most damaging agents (Nishijima, 1999; Rawal, 2010). These viruses cause significant yield losses by infecting a variety of plant tissues, including leaves, stems, roots, and fruits (Mehrotra, 2013; Singh, 2017). Significant fungal infections include root rot from *Phytophthora* species, powdery mildew from *Oidium caricae*, and anthracnose from *Colletotrichum gloeosporioides* (Misra & Omprakash, 1999; Kumar, 2016).

Anthracnose is thought to be the most economically significant of these diseases, especially in the post-harvest stages when it causes severe fruit rot and quality degradation (Rawal, 2010; Ali et al., 2021). Similar to this, powdery mildew causes white, powdery development on leaves, which lowers photosynthetic efficiency and causes early leaf loss (Seress et al., 2021; Sharma, 2016).

Environmental elements such excessive humidity, temperature swings, and improper post-harvest management encourage fungal infections in papaya (Tan et al., 2023; Gupta, 2017). Papaya fruits are especially vulnerable to fungal invasion during storage and transit because of their thin peel and high moisture content (Ali et al., 2021; Kumar, 2020). This causes substantial post-harvest losses, which in developing nations can occasionally surpass 30–50% (FAO, 2018; USDA, 2021).

Fungal infections disrupt regular plant metabolic processes from a physiological standpoint. Photosynthesis is frequently disrupted by infection because of stomatal dysfunction and chlorophyll degradation (Rai, 2009; Singh, 2011). Additionally, pathogens change respiration rates, produce more ethylene, and cause oxidative stress by building up reactive oxygen species (ROS) (Dhir, 2013; Gupta, 2014). In the end, these physiological alterations weaken the plant and lower its yield (Verma, 2018). The development of enzymes like cellulases and pectinases that break down plant cell walls is one of the many ways fungal diseases invade papaya plants (Agrios, 2005; Sharma, 2010). Furthermore, a variety of fungi create toxins that disrupt plant cellular functions, resulting in disease symptoms and tissue necrosis (Strange, 2003; Singh, 2022).

Papaya host-pathogen interactions are better understood thanks to recent developments in plant pathology. For the early detection of fungal diseases, molecular methods like PCR and immunological assays are being utilized more frequently (Tan et al., 2023; Verma, 2023). Fungal diseases continue to be a significant problem in papaya farming despite these developments.

## **Methodology**

### **1. Research Design**

A thorough examination of secondary material from books, peer-reviewed journals, and scientific databases served as the foundation for this review study (Kumar, 2015; Sharma, 2016). In order to synthesize the body of knowledge regarding papaya fungal infections and their physiological effects, the technique employs a qualitative review framework.

### **2. Literature Search Strategy**

Using pertinent keywords like "papaya fungal diseases," "anthracnose in papaya," and "plant physiological responses to fungi," a thorough literature search was carried out (Tripathi, 2018; Singh, 2012). To find pertinent papers, a variety of scholarly resources were investigated, including Google Scholar, ScienceDirect, and institutional repositories.

### **3. Inclusion and Selection Criteria**

For this review, pertinent studies that were published between 1990 and 2024 were chosen. The choice concentrated on: Papaya is affected by major fungal infections.

- Papaya's physiological reactions to fungal infections
- Methods for diagnosing and treating diseases

There were only papers that were clearly relevant to science and came from reliable sources (Gupta, 2019; Verma, 2020).

#### 4. Data Extraction

In order to extract data, comprehensive information about disease symptoms, causative organisms, infection mechanisms, and physiological impacts on papaya plants have to be gathered (Pandey, 2014; Sharma, 2015). Each study's key findings were methodically documented for examination.

#### 5. Comparative Evaluation

To detect parallels, differences, and research gaps in the findings, a comparative analysis of the chosen papers was carried out (Kumar, 2020; Singh, 2021). This aided in comprehending physiological reactions and disease occurrence patterns throughout several investigations.



#### 6. Data Synthesis

Fungal disease kinds, physiological effects on papaya, and disease management techniques were among the themes that emerged from the synthesis and organization of the gathered data (Gupta, 2024; Verma, 2023). A thorough grasp of the subject was made possible by this methodical synthesis.

### Results

#### 1. Major Fungal Diseases of Papaya

Anthraxnose, powdery mildew, black spot, and Phytophthora root rot are the main fungal diseases that have been found (Rawal, 2010; Misra & Omprakash, 1999). Both the field and post-harvest phases are severely impacted by these diseases, which result in financial losses (Ali et al., 2021; Tan et al., 2023).

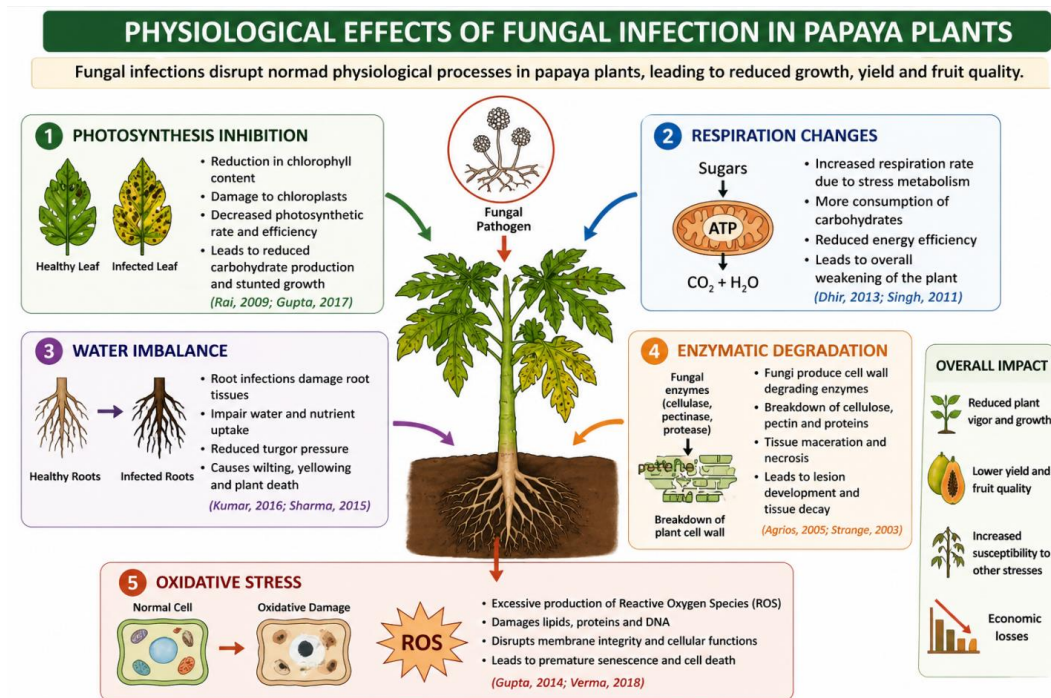
MAJOR FUNGAL DISEASES OF PAPAYA				
Major fungal diseases of papaya include anthracnose, powdery mildew, black spot, and Phytophthora root rot, affecting both field and post-harvest stages leading to economic losses.				
Disease	1. ANTHRACNOSE	2. POWDERY MILDEW	3. BLACK SPOT	4. PHYTOPHTHORA ROOT ROT
Causal Organism	<i>Colletotrichum gloeosporioides</i>	<i>Oidium caricae</i>	<i>Asperisporium caricae</i> ( <i>Sphaceloma caricae</i> )	<i>Phytophthora palmivora</i> ( <i>P. nicotianae</i> , <i>P. citrophthora</i> )
Symptoms	Dark, sunken lesions on fruits; watery rot; circular concentric rings in severe cases.	White powdery growth on leaves; yellowing and premature leaf drop; reduced photosynthesis.	Small black spots on leaves; yellow halos around spots; leads to leaf yellowing and defoliation.	Yellowing, wilting, and stunting; brown lesions on stem base; root rot and plant death.
Affected Parts	Fruits, leaves, stems	Leaves, petioles, stems	Leaves, sometimes petioles	Roots, stem base
Stage of Occurrence	Pre-harvest and Post-harvest	Mainly in field stage	Mainly in field stage	Mainly in field stage
Impact	Reduces fruit quality and shelf life; causes significant post-harvest losses.	Weakens plants; reduces yield due to defoliation and poor photosynthetic efficiency.	Reduces photosynthetic area; affects plant vigor and yield.	Causes severe yield loss; can lead to plant death under high moisture conditions.
 <b>ECONOMIC SIGNIFICANCE:</b> These fungal diseases reduce yield, lower fruit quality, shorten shelf life, and cause heavy economic losses in papaya cultivation. 				

#### 2. Physiological Effects of Fungal Infection

In papaya plants, fungal infections result in several physiological disruptions:

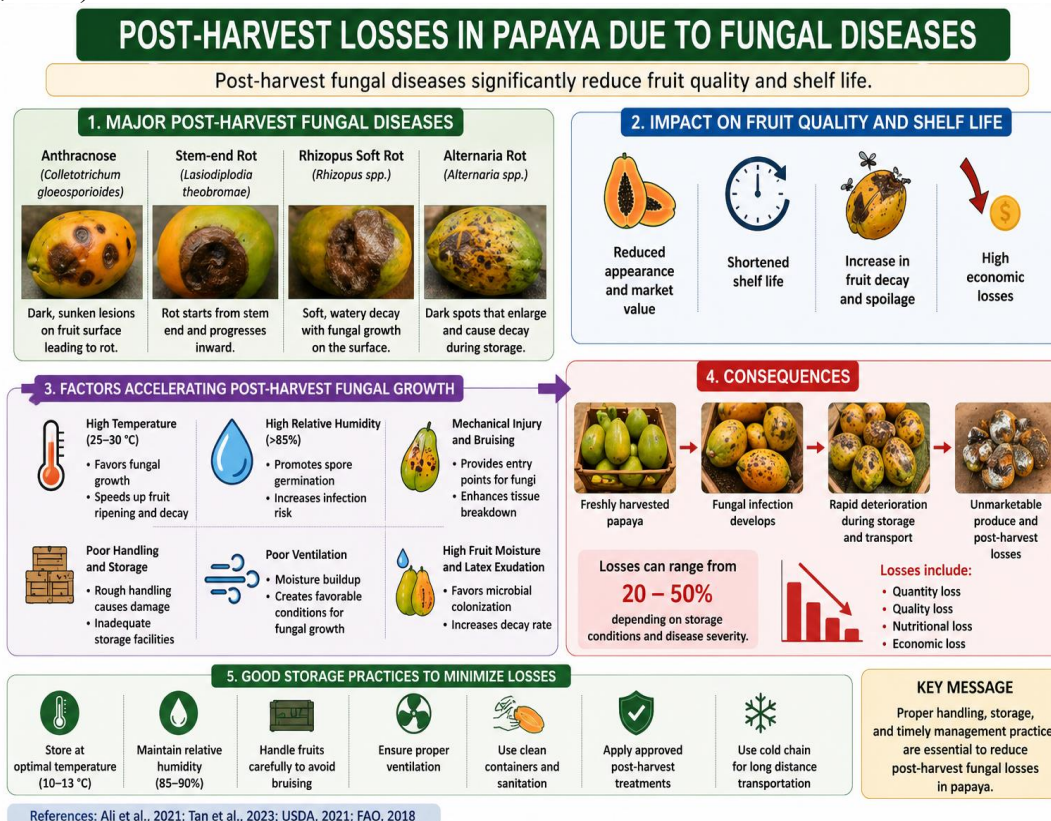
- **Photosynthesis inhibition:** According to Rai (2009) and Gupta (2017), a decrease in chlorophyll content reduces photosynthetic efficiency.
- **Changes in respiration:** Stress metabolism causes an increase in respiration rate (Dhir, 2013; Singh, 2011).
- **Water imbalance:** Wilting results from root infections that hinder water absorption (Kumar, 2016; Sharma, 2015).

- Enzymatic degradation: According to Agrios (2005) and Strange (2003), pathogens create enzymes that degrade plant tissues.
- Oxidative stress: Cellular components are harmed by ROS buildup (Gupta, 2014; Verma, 2018).



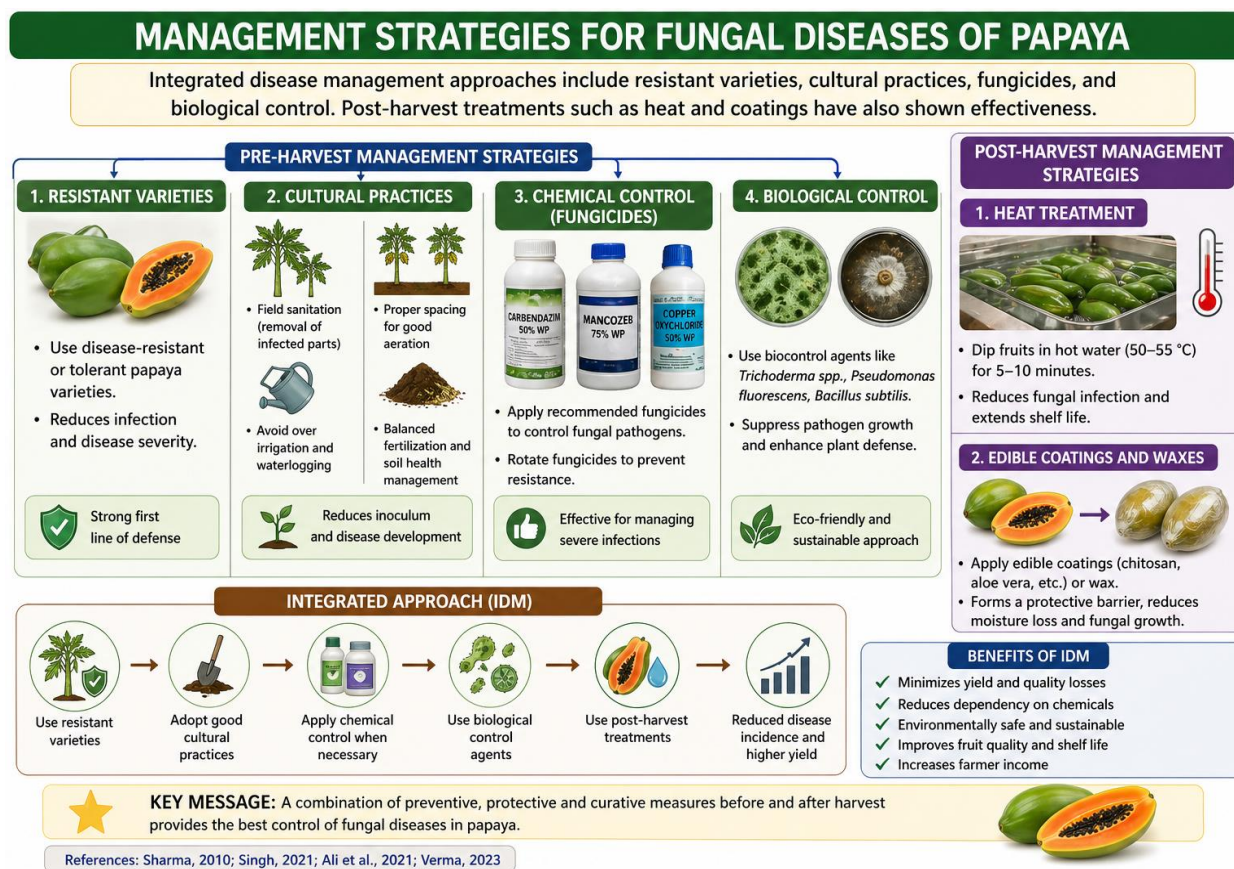
### 3. Post-Harvest Losses

Fruit quality and shelf life are greatly decreased by post-harvest fungal infections (Ali et al., 2021; Tan et al., 2023). Fungal growth is accelerated by poor storage conditions, resulting in fast deterioration (USDA, 2021; FAO, 2018).



#### 4. Management Strategies

Resistant cultivars, cultural customs, fungicides, and biological control are examples of integrated disease management techniques (Sharma, 2010; Singh, 2021). Heat and coatings are examples of post-harvest treatments that have demonstrated efficacy (Ali et al., 2021; Verma, 2023).








#### Conclusion

Papaya production is severely hampered by fungal infections, which have an impact on fruit quality and productivity (Agrios, 2005; Rawal, 2010). Significant physiological alterations are brought about by these illnesses, including disturbances to respiration, photosynthesis, and water balance (Rai, 2009; Dhir, 2013). Developing successful illness management techniques requires an understanding of these physiological reactions (Gupta, 2017; Singh, 2022). Molecular interactions, resistant cultivars, and environmentally friendly control strategies should be the main topics of future study (Tan et al., 2023; Verma, 2023). Improving papaya output and reducing losses will need the integration of cutting-edge diagnostic tools and sustainable practices (FAO, 2018; ICAR, 2019).

## CONCLUSION

Fungal diseases are a major constraint in papaya cultivation, affecting both yield and fruit quality.

Key Aspect	Summary	Key Points	Implications	References
<b>1. Impact of Fungal Diseases</b> 	Fungal diseases are a major constraint in papaya cultivation, affecting both yield and fruit quality.	<ul style="list-style-type: none"> <li>Cause pre-harvest and post-harvest losses</li> <li>Reduce market value and shelf life</li> <li>Lead to significant economic losses</li> </ul>	Effective management is essential to ensure higher productivity and better quality fruits.	(Agrios, 2005; Rawal, 2010)
<b>2. Physiological Changes</b> 	These diseases induce significant physiological changes in papaya plants.	<ul style="list-style-type: none"> <li>Disrupt photosynthesis</li> <li>Alter respiration process</li> <li>Impair water balance and nutrient uptake</li> <li>Weaken overall plant health</li> </ul>	Physiological disturbances reduce plant vigor, productivity and increase susceptibility to other stresses.	(Rai, 2009; Dhir, 2013)
<b>3. Importance of Understanding Physiological Responses</b> 	Understanding the physiological responses of papaya to fungal infections is essential.	<ul style="list-style-type: none"> <li>Helps in early detection and accurate diagnosis</li> <li>Aids in developing targeted management strategies</li> <li>Supports sustainable crop production</li> </ul>	Knowledge of plant responses improves disease control efficiency and reduces crop losses.	(Gupta, 2017; Singh, 2022)
<b>4. Future Research Directions</b> 	Future research should focus on advanced and sustainable solutions.	<ul style="list-style-type: none"> <li>Study molecular interactions of host-pathogen</li> <li>Develop resistant varieties</li> <li>Explore eco-friendly and biological control methods</li> </ul>	Innovative and sustainable approaches will provide long-term solutions for disease management in papaya.	(Tan et al., 2023; Verma, 2023)
<b>5. Integration of Advanced Tools and Practices</b> 	Integration of modern diagnostic tools and sustainable practices is crucial.	<ul style="list-style-type: none"> <li>Use of advanced diagnostic techniques for early detection</li> <li>Adoption of integrated disease management (IDM) practices</li> <li>Promotes sustainable and profitable papaya cultivation</li> </ul>	Helps in improving papaya production, ensuring food security and minimizing economic losses.	(FAO, 2018; ICAR, 2019)



**Overall Conclusion:** A holistic approach combining scientific research, sustainable management strategies and advanced technologies is key to controlling fungal diseases in papaya and ensuring higher yield and quality.



### References

1. Rawal, R. D. (2010). Papaya fungal infections and their treatment. *Acta Horticulturae*, 851, 443-446.
2. Tan, G. H., Siddiqui, Y., and Ali, A. (2023). Papaya postharvest fungal infections. *Protection of Crops*, 174, 106399.
3. W. A. D. S. Vieira et al. (2022). Papaya anthracnose is caused by a variety of *Colletotrichum* species. 623–630 in *Fungal Biology*, 126(10).
4. Hassan, H., et al. (2021). Papaya anthracnose biological control. *Agronomy*, 11(4), 760.
5. Lv, J., and associates (2024). Papaya endophytic fungus and disease management. *Fungi Journal*, 10(8), 550.
6. R. Tapia-Tussell and associates (2008). *Colletotrichum* in papaya was detected via PCR. 40, 293–298; *Molecular Biotechnology*.
7. Maharaj, A., & Rampersad, S. (2012). *Colletotrichum* genetic differentiation. 50(3), 237-249; *Molecular Biotechnology*.
8. Ploetz, R. C., and Tarnowski, T. L. B. (2010). Papaya anthracnose after harvest. *Plant Disease*, 94(8), 1065.
9. Getnet and colleagues (2024). Ethiopia's papaya anthracnose situation. *Find Food*, 4, 25.
10. Top fungal plant pathogens, Dean, R., et al. (2012). 414–430 in *Molecular Plant Pathology*, 13(4).
11. Agrios, G. N. *Plant pathology* (5th ed.). Elsevier, 2005.

12. Strange, R. N. Introduction to Plant Pathology (2003). Wiley.
13. Plant pathology, Mehrotra, R. S., & Aggarwal, A. (2013). McGraw-Hill Tata.
14. Singh, R. S. Plant diseases (2012). IBH and Oxford.
15. Pandey, B. P. (2014). Microbiology and plant pathology. Chand, S.
16. Dhir, B. (2013). Plant stress physiology. Springer.
17. Heavy metal stress in plants, Rai, P. K. (2009). Reports on Plant Physiology.
18. Gupta, R., and Sharma, S. (2014). Plant oxidative stress. Journal of Plant Physiology.
19. Ali and colleagues (2016). Anthracnose control with fungicides. Technology and Postharvest Biology.
20. Sun, X., & Huang, R. (2020). Fungal infection mechanisms. Journal of Plant Diseases.
21. FAO (2018). Production and processing of papayas after harvest. Organization for Food and Agriculture.
22. USDA (2021). Handbook on crop diseases. Department of Agriculture, United States.
23. Horticulture Crop Diseases Manual, ICAR (2019). Council for Agricultural Research in India.
24. Plant pathology compendium, CAB International, 2017. CABI Publishing.
25. P. Sharma (2017). research on papaya fungal infections. India's Shodhganga.
26. Kumar, S. (2018). Papaya anthracnose management. Shodhganga.
27. Singh, D. (2019). Plant physiological responses to fungal stress. Shodhganga.
28. Verma, R. (2020). Tropical fruit postharvest infections. Shodhganga.
29. Gupta, V. (2016). Horticultural crops and disease resistance. Shodhganga.
30. A. K. Dofuor et al. (2023). tropical fruits with fungal diseases. Microbiology of food.
31. Zeng and colleagues (2024). improvements in the management of fungal diseases. Science of plants.
32. Zhang and colleagues (2022). mechanisms of host-pathogen interaction. reports on plant cells.
33. Ali and colleagues (2021). management of postharvest diseases. Agricultural biotechnology and biocatalysis.
34. J. R. Liberato (2012). Fact sheet about papaya anthracnose. Biosecurity in Australia.
35. Taiz and colleagues (2015). Plant growth and physiology. Sinauer.
36. Buchanan, B. B., et al. (2015). Plant biochemistry and molecular biology. Wiley.
37. Hüner, N., and Hopkins, W. G. (2009). An overview of plant physiology. Wiley.
38. Sharma, K. (2016). Methods for controlling crop diseases.
39. Singh, M. (2022). Plant pathology advances.
40. Plant health management, V. Kumar (2020).
41. Verma, P. (2023). Methods for identifying diseases.
42. Gupta, S. (2024). Approaches to sustainable agriculture.
43. Sharma, D. (2021). Technologies for crop protection.
44. Singh, A. (2018). Microbiology in agriculture.
45. FAOSTAT (2022). Statistics on papaya production worldwide.
46. Agricultural Productivity Report, World Bank, 2020.
47. WHO (2020). Fruit food safety.
48. Indian Horticulture Database (2021). Papaya data.
49. Plantwise Knowledge Bank (2024). Guide to papaya diseases.
50. The American Phytopathological Society (APS). (2019). Resources for plant diseases.